



LEADERS
REAL ESTATE
Perimeter Park Cir

SAINT AUGUSTINE – EPIC VILLAGE

SEC FL-207 & ROLLING HILLS DRIVE | ST. AUGUSTINE, FL 32086

PROPERTY FLYER



LOCATION

Southwest St. Augustine, FL.
Approximately 3.5 miles northeast of I-95 on FL-207.

AVAILABLE SPACE

Flexible size and space options
available for BTS or land
purchase/lease

RATE

Please call for pricing

FOR FURTHER INFORMATION:

Nathan Palmer SVP
npalmer@leadersre.com
p. (614) 586-3303

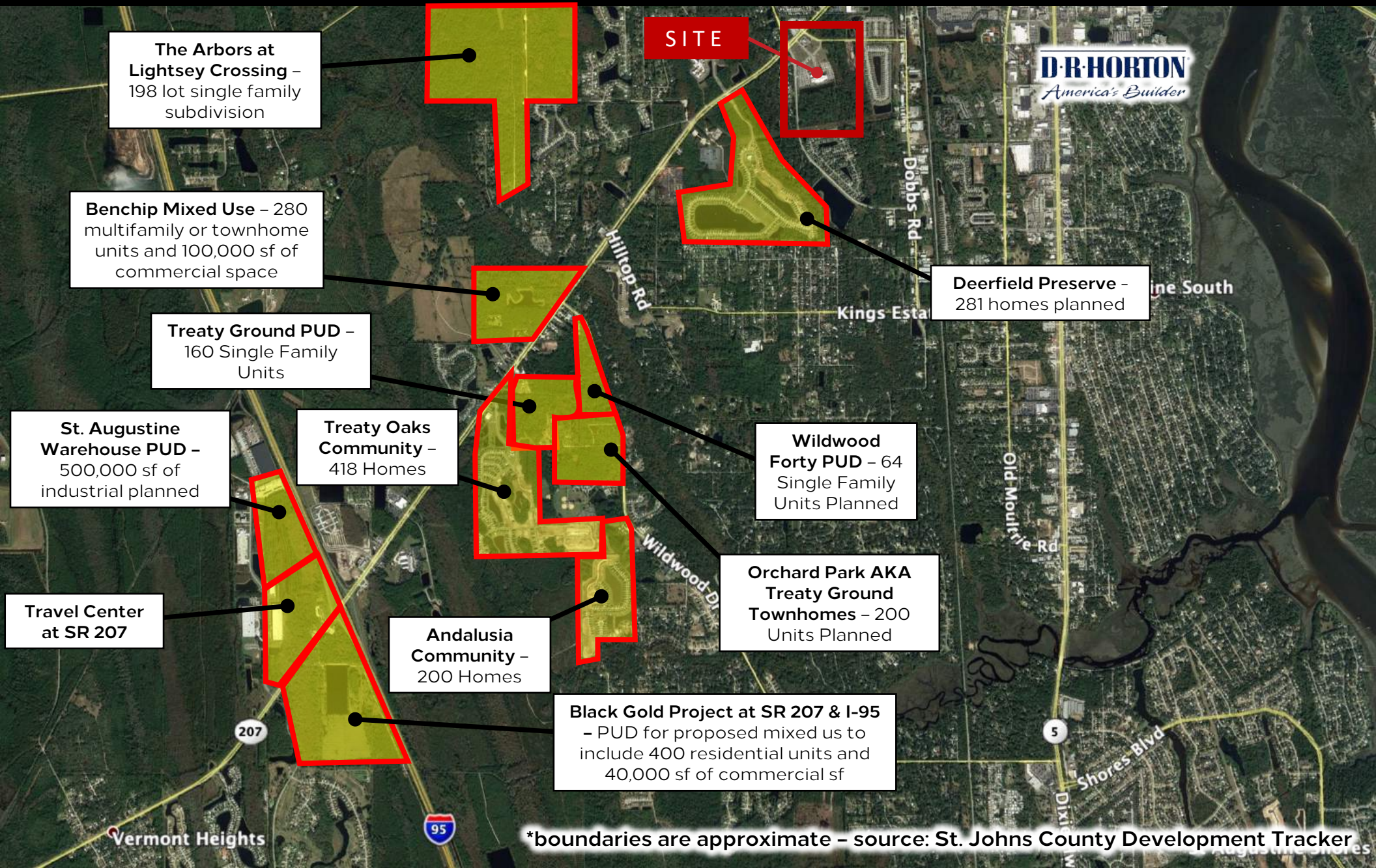
Jerry Robson
jrobson@leadersre.com
p. (440) 823-3746

Exclusively listed by:



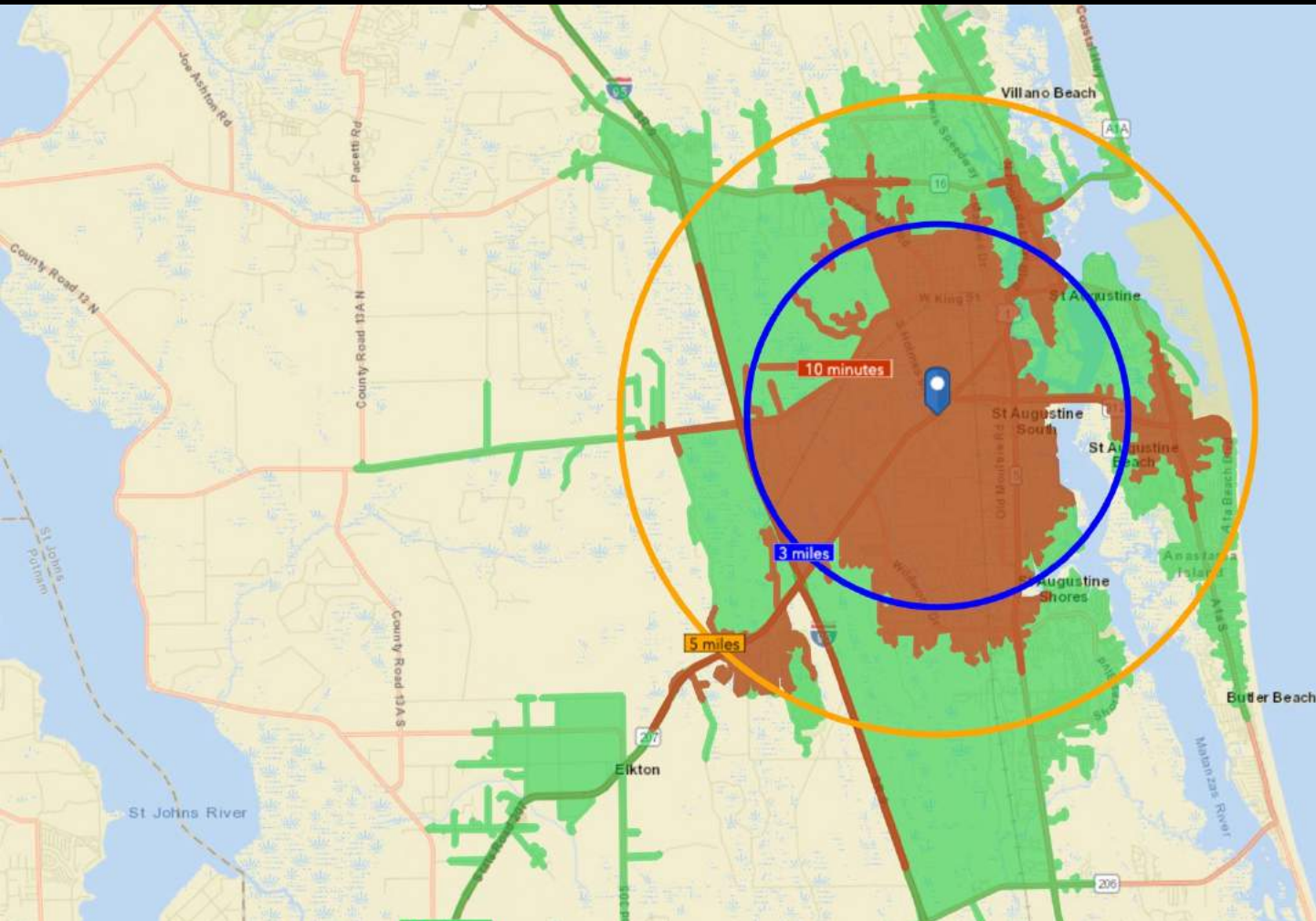
SEC FL-207 & ROLLING HILLS DRIVE | ST. AUGUSTINE, FL 32086

PROPERTY FLYER



SEC FL-207 & ROLLING HILLS DRIVE | ST. AUGUSTINE, FL 32086

PROPERTY FLYER



DEMOGRAPHICS

	POPULATION	MEDIAN INCOME	GROWTH 16'-21'	DAYTIME POP
3 Mile	29,985	\$43,968	11.2%	42,605
5 Mile	65,496	\$48,280	11.3%	76,863
10 Minutes	33,465	\$44,500	11.7%	45,183
15 Minutes	74,681	\$49,460	12.5%	84,738